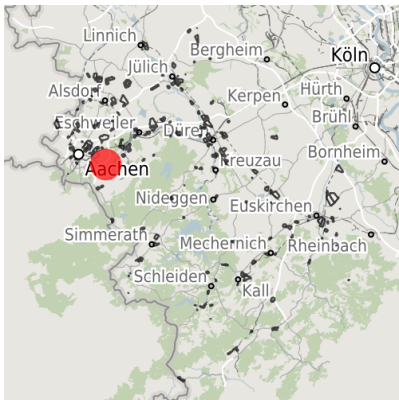


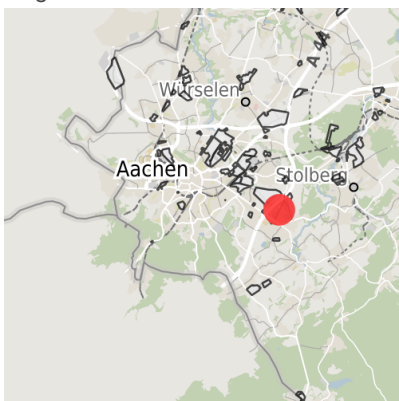
## Factsheet parcel

Designation	Gewerbepark Brand (No. 134)
Area size	7,185 m²
City / district	Aachen, Stadt Aachen

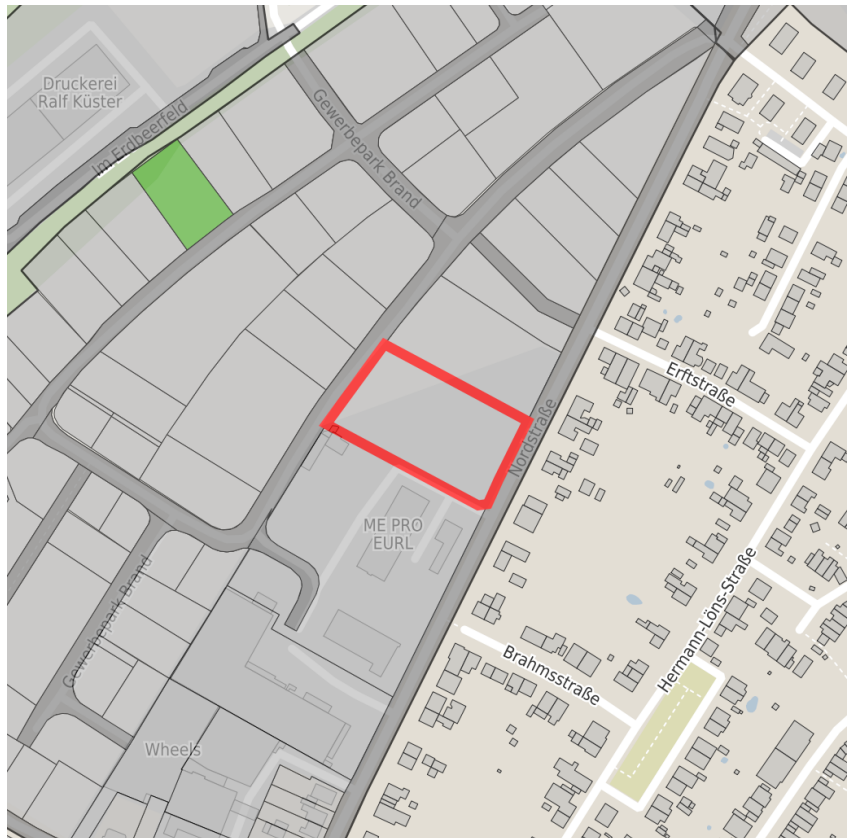
## Map view



Regional overview



Municipal overview



Detail view

© [OpenStreetMap](#) contributors.

## Availabilities

Immediately available area	Available area within short term (< 2 years)	Available area within medium term (2-5 years)	Available area within Long term (> 5 years)
Not available area			

## Other areas

Private ownership	Water area	Rail area	Street area
Green area	Living space	disposal/supply infrastructure	Other Area

## Parcel

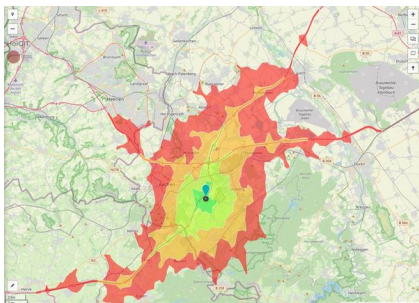
Area size	7,185 m <sup>2</sup>
Price	On Demand
Availability	Not available area
Area designation	Commercial zone
24h operation	No

## Commercial zone

From military terrain to business park

The former military terrain with a size of 140.000 m<sup>2</sup> becomes a future business park by pulling down old structures and buildings. Located in the south west of Aachen the restructuring will produce an attractive business area for nearly all branches of industry and trade. The business park is convenient in respect to traffic and close to the centre of Aachen-Brand.

Location	Outskirts
Industrial tax multiplier	475.00 %



Erreichbarkeit in 20 Minuten: 496.500  
Einwohner

## Transport connections

		Distance	
		[km]	[min]
Freeway	A44	2.2	5
Highway	B258	6.6	8
Airport	Maastricht-Aachen	44.6	32
	Liège (B)	61.0	42
Port	Binnenhavenweg Stein (NL)	47.3	35
	Liège (B)	53.4	40
Rail freight	Köln-Hbf	78.5	54
Railway	AC-Hbf	8.0	20
Public transport	Bushaltepunkt	0.6	5

## Information about Aachen

Aachen's successful economy is indicated by the number of high-tech companies within the region. It would be difficult to find such a concentration and variety of technical and scientific potential in any other region of Europe. Research and instruction at the highest level are provided by five centres of higher education, including the world famous RWTH Aachen University. In addition Aachen has four Fraunhofer Institutes and the largest university clinic in Europe.



**Contact person**



Immobilienmanagement Stadt Aachen  
+49 (0)241/432-2309  
[immobilienmanagement-ac@aachen.de](mailto:immobilienmanagement-ac@aachen.de)