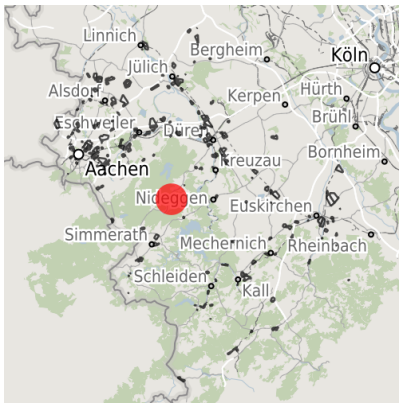


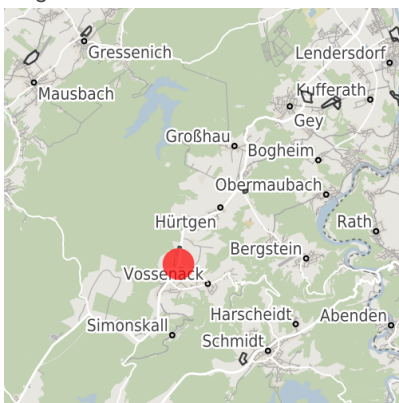
## Factsheet parcel

Designation	Gewerbegebiet Vossenack (No. 012)
Area size	1,535 m <sup>2</sup>
City / district	Hürtgenwald, Kreis Düren

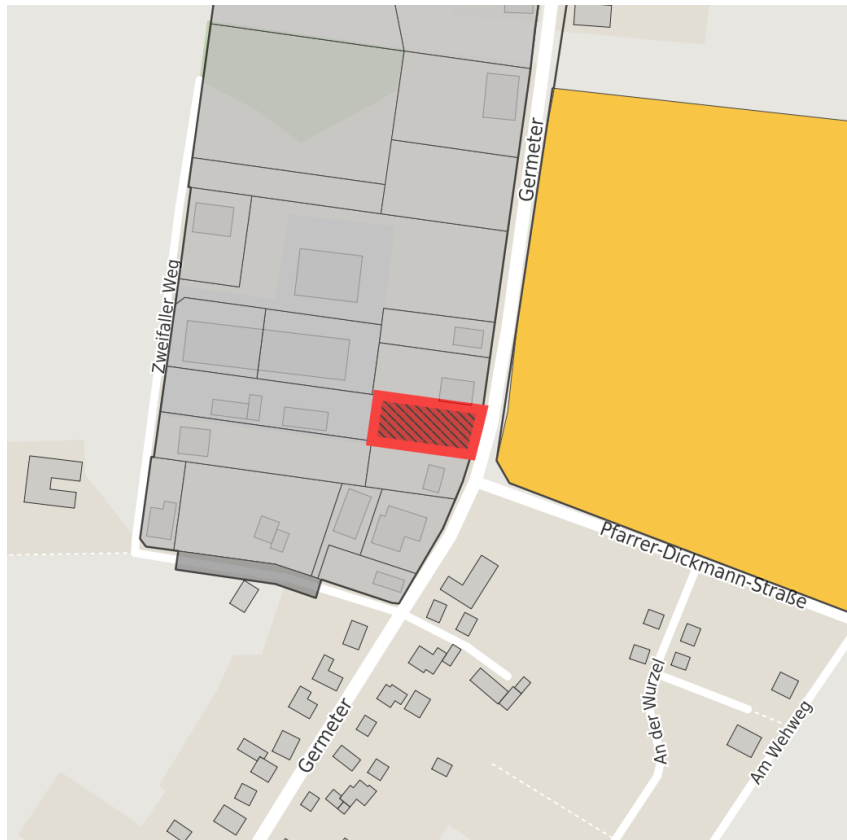
## Map view



Regional overview



Municipal overview



Detail view

© [OpenStreetMap](#) contributors.

## Availabilities

- |                            |  |   |   |
|----------------------------|--|---|---|
| Immediately available area | Available area within short term (< 2 years) | Available area within medium term (2-5 years) | Available area within Long term (> 5 years) |
| Not available area         |  |   |   |

## Other areas

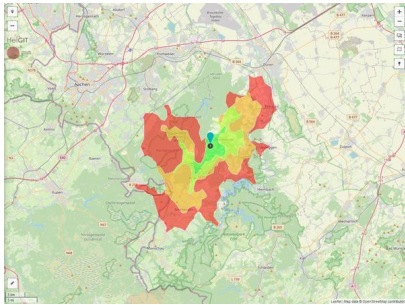
- |                   |              |                                |             |
|-------------------|--------------|--------------------------------|-------------|
| Private ownership | Water area   | Rail area                      | Street area |
| Green area        | Living space | disposal/supply infrastructure | Other Area  |

## Parcel

Area size	1,535 m <sup>2</sup>
Price	On Demand
Availability	Immediately available area
Area designation	Mixed use area
Divisible	No
24h operation	No

## Commercial zone

Location	Outskirts
Industrial tax multiplier	510.00 %



Ereichbarkeit in 20 Minuten: 53.000  
 Einwohner

## Transport connections

		Distance
		[km] [min]
Freeway	A4	38.0
Highway	B399	0.0
Airport	Köln-Bonn	83.0
Port	Köln	78.0
Rail freight	Düren	28.0
Railway	Düren	28.0
Public transport	BVR	0.0

## Information about Hürtgenwald

The municipality of Hürtgenwald (an officially recognized spa resort) is situated in the German-Belgian Hohes Venn-Eifel Nature Reserve. It was formed on July 1, 1969 following the voluntary amalgamation of seven previously independent administrative entities (Bergstein, Brandenburg, Gey, Großhau, Hürtgen, Kleinhau, and Straß).

Hürtgenwald achieved its current size on January 1, 1972. As part of the municipal boundary reform it amalgamated with Vossenack (formerly part of the county of Monschau).



## Links

[Internetseite der Gemeinde](#)

## Contact person



Mrs. Annemarie Marx  
Gemeinde  
Zentrale Verwaltung, Bauamt  
August-Scholl-Straße 3  
52393 Hürtgenwald Hürtgenwald  
NRW  
02429 30956  
amarx@huerigenwald.de