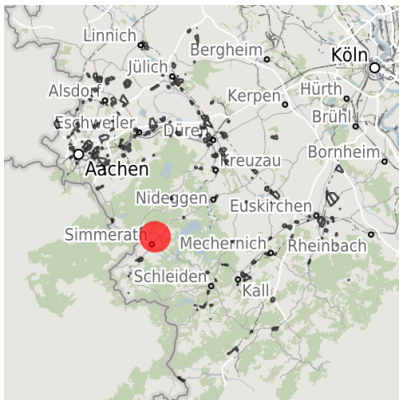


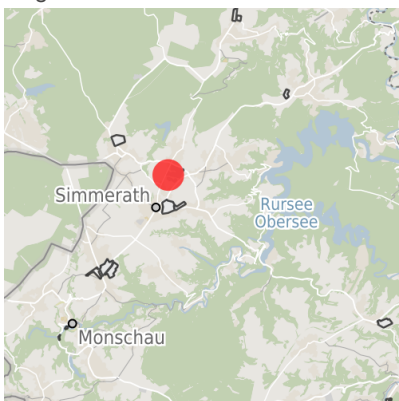
Factsheet parcel

| | |
|-----------------|---|
| Designation | Gewerbe- und Industriegebiet Rollesbroich (No. 064) |
| Area size | 1,711 m ² |
| City / district | Simmerath, StädteRegion Aachen |

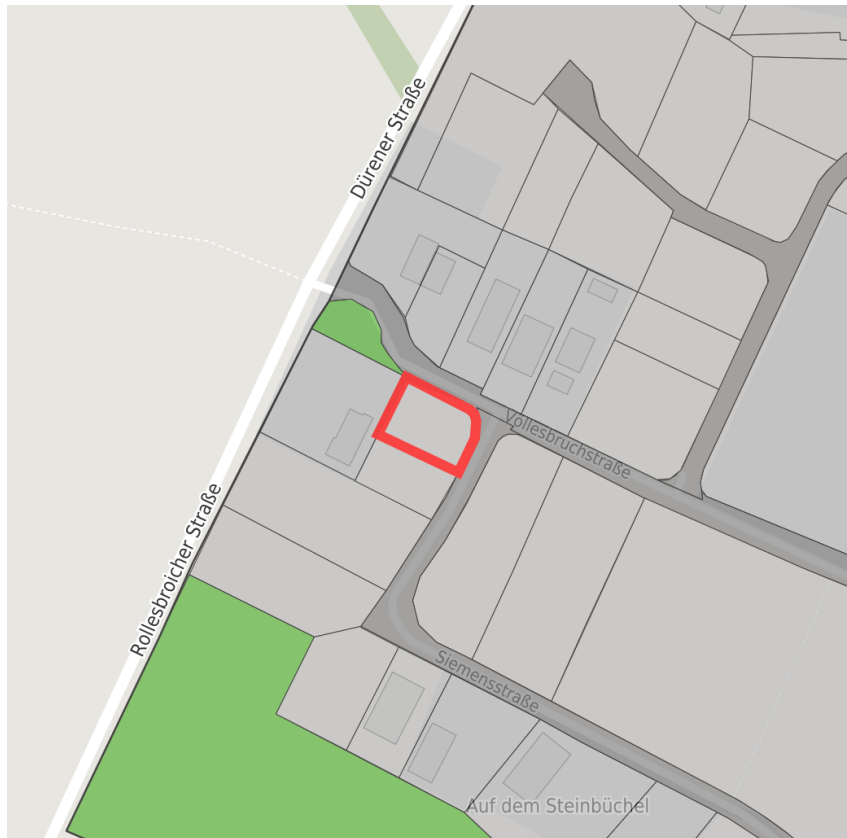
Map view



Regional overview



Municipal overview



Detail view

© [OpenStreetMap](#) contributors.

Availabilities

| | | | |
|----------------------------|--|---|---|
| Immediately available area | Available area within short term (< 2 years) | Available area within medium term (2-5 years) | Available area within Long term (> 5 years) |
| Not available area | | | |

Other areas

| | | | |
|-------------------|--------------|--------------------------------|-------------|
| Private ownership | Water area | Rail area | Street area |
| Green area | Living space | disposal/supply infrastructure | Other Area |

Parcel

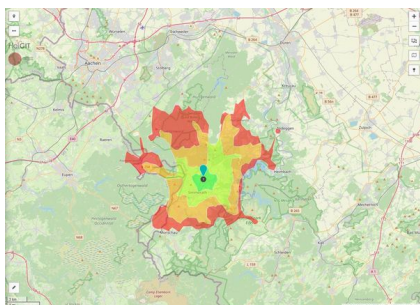
| | |
|------------------|------------------------|
| Area size | 1,711 m ² |
| Price | 23.00 €/m ² |
| Availability | Not available area |
| Area designation | Commercial zone |
| 24h operation | No |

Commercial zone

Rollesbroich

Since 1989 over 35 businesses have benefited from the locational advantages in the Rollesbroich commercial and industrial zone. By employing needs-oriented space development the location focuses on continuous growth. The dimensions of the commercial lots can be adapted to the companies' needs. SMEs in particular value the innovative milieu which has established itself above all since the start-up and service center was opened in 2002.

| | |
|---------------------------|---|
| Location | Outskirts |
| Main companies | Fa. Schwarz, Fa. SEM Stollenwerk Elektro- und Maschinenbau GmbH, Fa. WINK |
| Industrial tax multiplier | 445.00 % |
| Regional important? | Yes |



Erreichbarkeit in 20 Minuten: 41.000
Einwohner



GW_Rollesbroich.jpg

Transport connections

| | | Distance | |
|------------------|---------------------------|----------|-------|
| | | [km] | [min] |
| Freeway | A44 | 20.8 | 24 |
| Highway | B266 | 0.4 | 1 |
| Airport | Maastrich-Aachen | 74.8 | 52 |
| | Liège (B) | 77.1 | 53 |
| Port | Liège (B) | 64.4 | 48 |
| | Binnenhavenweg Stein (NL) | 70.5 | 52 |
| Railway | Aachen-Hbf | 28.3 | 35 |
| | Köln-Hbf | 77.0 | 65 |
| Public transport | Bushaltestelle | 0.5 | 1 |

Information about Simmerath

Simmerath represents an ambitious and modern community with 15,000 inhabitants. Located in the southern part of the Aachen region Simmerath is an interesting investment opportunity with excellent connection to the Netherlands, Belgium, Aachen and Cologne.

Establishing, investing and expanding business in Simmerath is supported by governmental programs in order to strengthen industry structure.

Majestic beech forests, gnarled oak trees and wild rivers: Experience pure nature in the Eifel National Park. Enhance working creativity surrounded by inspiring nature.



Links

[Gemeinde Simmerath](#)

Contact person



Mr. André Koll
Gemeinde Simmerath
+ 49 (0) 24 73/607 174
akoll@gemeinde.simmerath.de