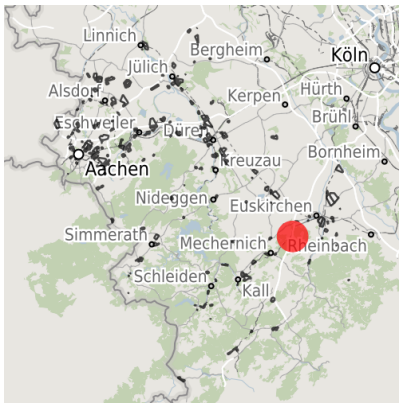


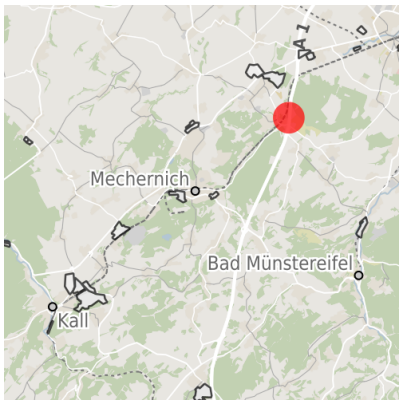
Factsheet parcel

Designation	Gewerbegebiet Satzvey (No. 019)
Area size	6,486 m ²
City / district	Mechernich, Kreis Euskirchen

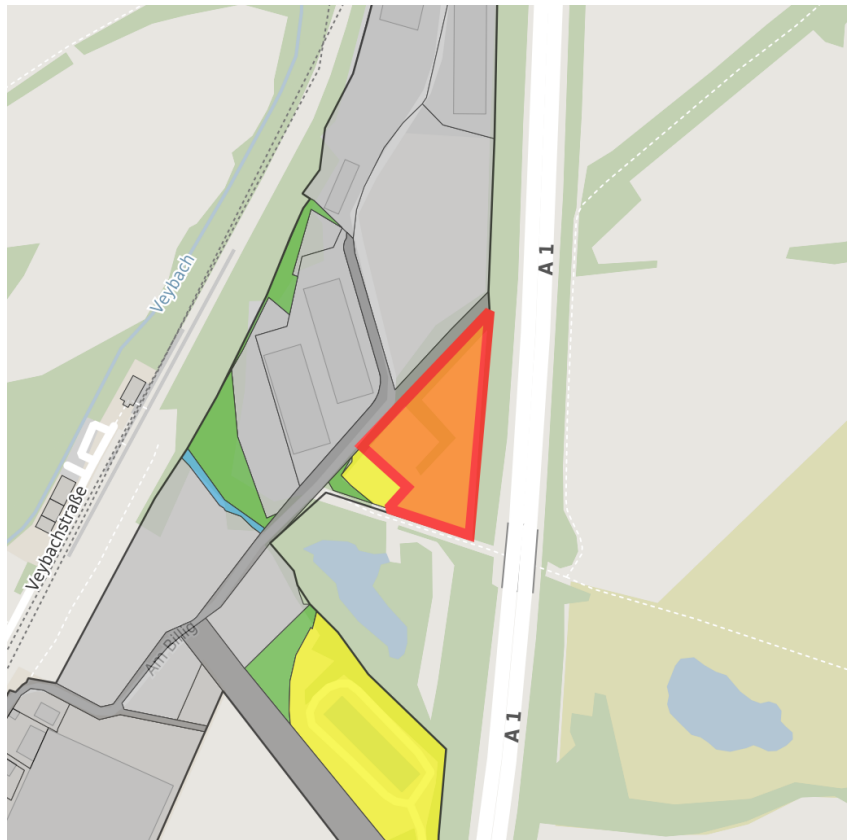
Map view



Regional overview



Municipal overview



Detail view

© [OpenStreetMap](#) contributors.

Availabilities

Immediately available area	Available area within short term (< 2 years)	Available area within medium term (2-5 years)	Available area within Long term (> 5 years)
Not available area			

Other areas

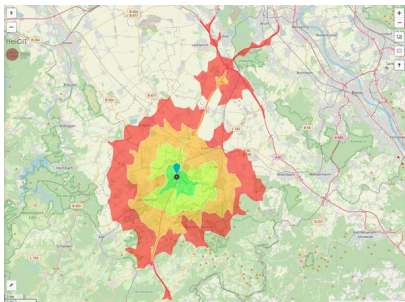
Private ownership	Water area	Rail area	Street area
Green area	Living space	disposal/supply infrastructure	Other Area

Parcel

Area size	6,486 m ²
Price	On Demand
Availability	Available area within short term (< 2 years)
Area designation	Commercial zone
Restriction	Yes
Divisible	Yes
24h operation	No

Commercial zone

Location	Outskirts
Main companies	Eifeler Naturstein GmbH
Industrial tax multiplier	423.00 %
Price range	from 20.00 €/m ² to 40.00 €/m ²



Erreichbarkeit in 20 Minuten: 129.000

Transport connections

		Distance	
		[km]	[min]
Freeway	A1	4.4	7
	B266	3.1	6
Highway	Köln-Bonn	56.4	38
	Maastricht-Aachen	118.0	61
Airport	Am Godorfer Köln	39.4	32
	Niehl Köln	62.9	43
Port	Köln-Hbf	49.9	41
	AC-Hbf	84.5	52
Railway	Bushaltestelle	0.8	4
Public transport			

Information about Mechernich

Because of its central position and a favorable traffic connection, Mechernich serves as a node for various industries and service companies. The Eifel region with its beautiful countryside is undoubtedly an area of high recreational value - Mechernich in particular offers a great deal in terms of leisure and culture.



Contact person



Mr. Peter Dierichsweiler
Stadt Mechernich
Bergstraße 1
53894 Mechernich
D NRW
+49 (0)2443-494220
p.dierichsweiler@mechernich.de